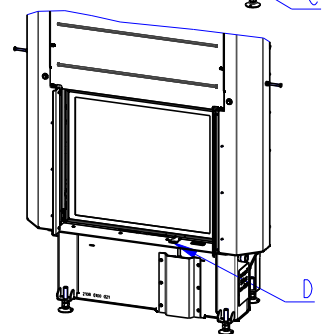
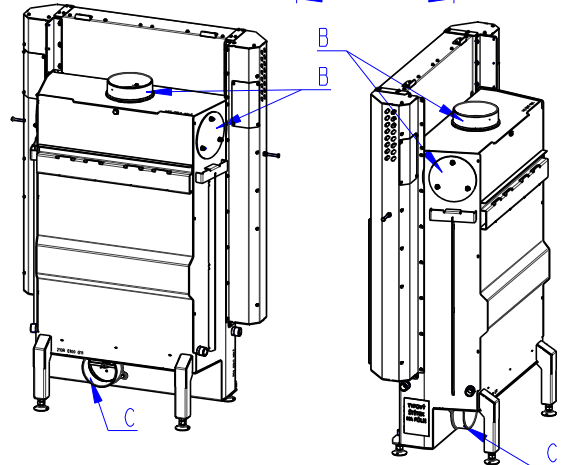
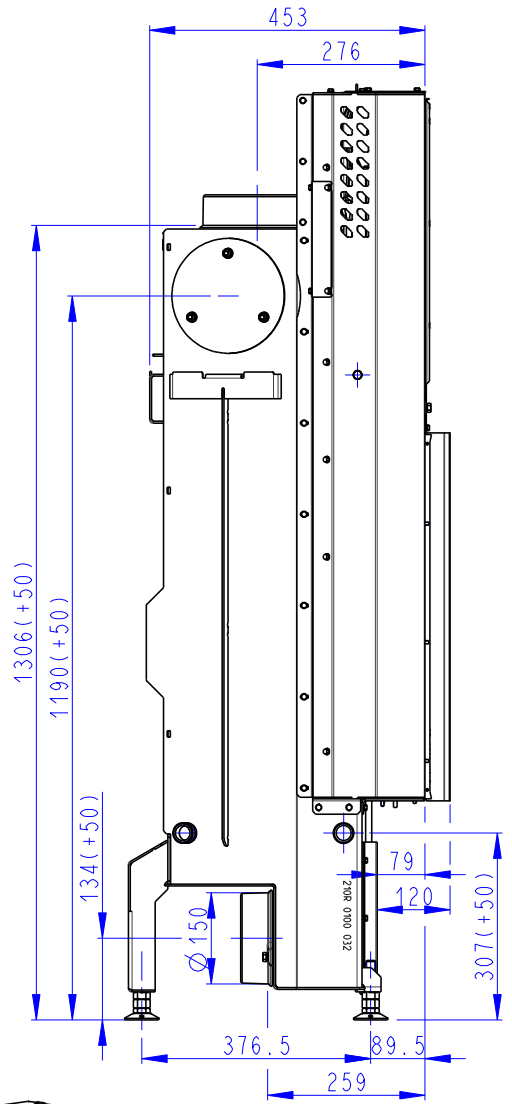
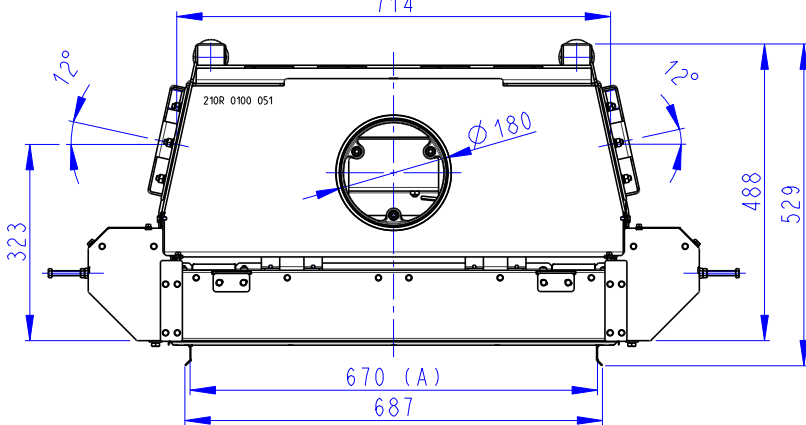
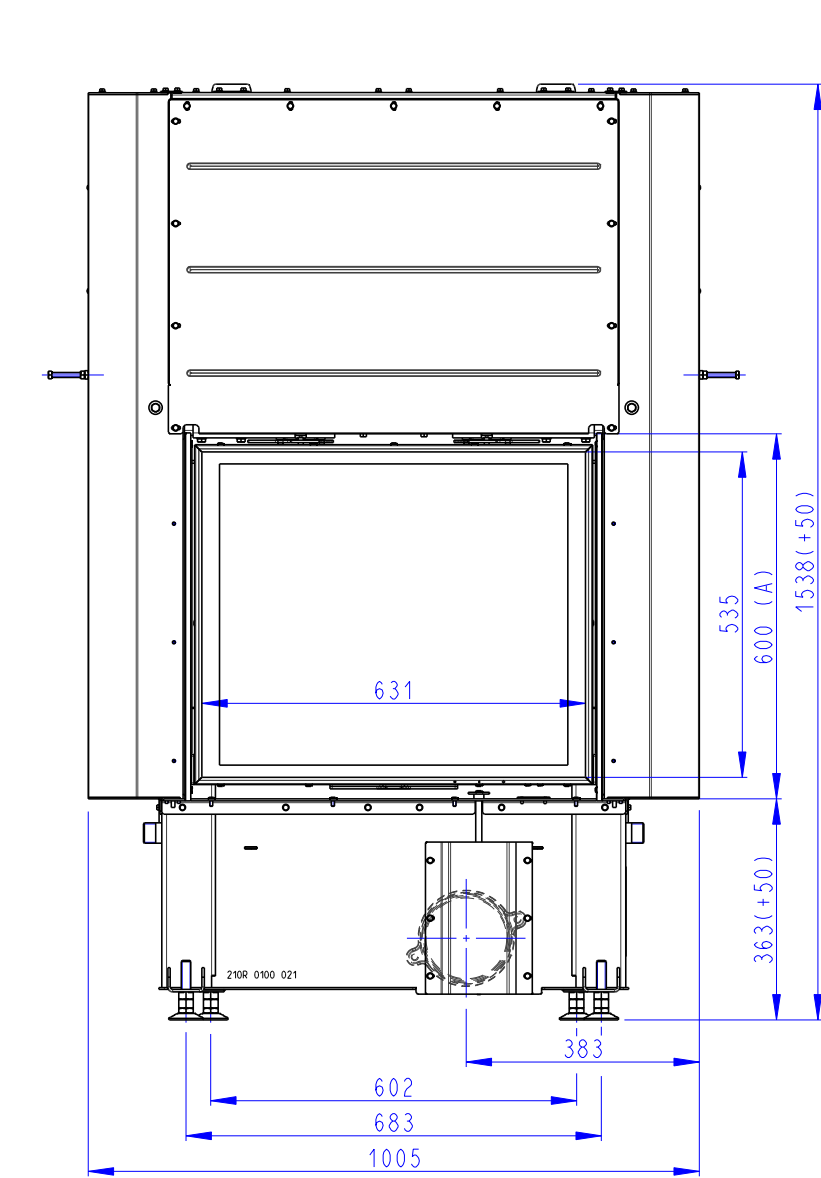


Rozměry v mm
Maße in mm
Dimensions in mm

IMPRESSION 2g L 67.60.01 - 210R	198 kg
IMPRESSION 2g L 67.60.01 + 12LG TOP01	275.4 kg
IMPRESSION 2g L 67.60.01 + 12LG TOP02	264 kg



- (A) Zastavbovy rozmer / Baumaße / In-built dimension
 (B) Litinový odvod kouře / Cast iron spigot / Der gusseiserne Rauchabgang
 (C) Centralni privod vzduchu / Central air inlet / Zentralluftzufuhr
 (D) Primarni a sekundarni vzduch / Primary and secondary air / Primärluft und Sekundärluft

